

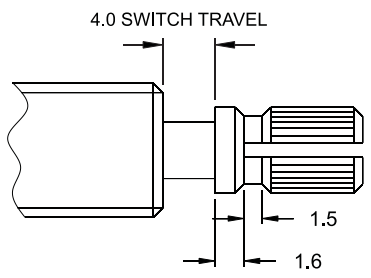
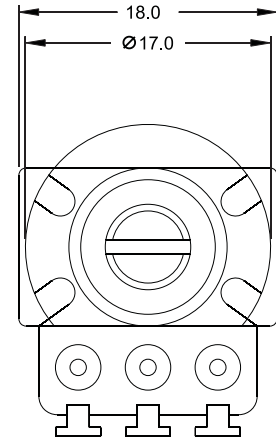
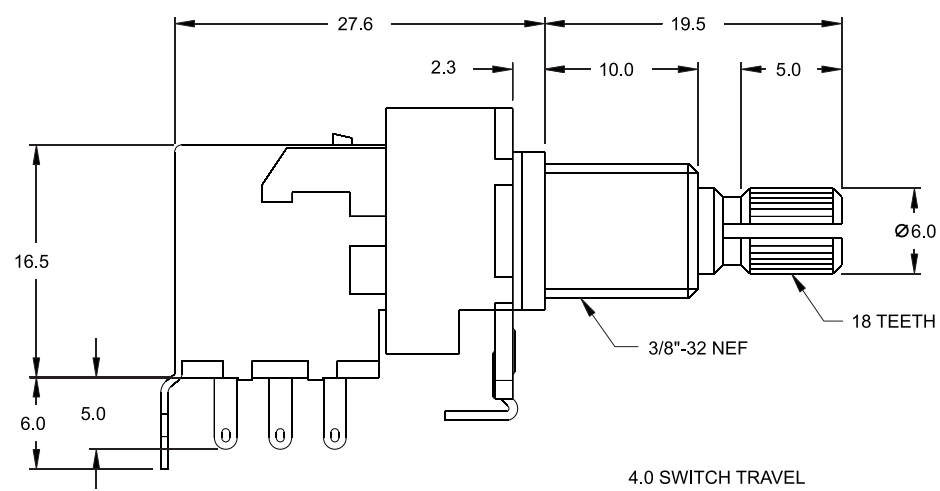
REVISIONS			
REV.	DESCRIPTION	DATE	APPROVED

All information on this drawing is proprietary and may not be reproduced in any manner or made available to any unauthorized person/party without written permission of ALPHA PRODUCTS, INC.



CUSTOMER APPROVAL	
SIGNATURE _____	DATE _____

- UMARKING:
- UBAGGING:
- UPACKING: BOX NOT TO EXCEED 24 LBS
- ULOGO (ALPHA ONLY):
- UFULL LOGO:



PART NUMBER	TAPER & VALUE
300/RC046400	A500K
300/RC046410	B50K

CUSTOMER ONLY

ITEM #	QTY REQD	UNIT MEASURE	PART OR IDENTIFYING NO.	NOMENCLATURE OR DESCRIPTION	MATERIAL SPECIFICATION
PARTS LIST					
TOLERANCES (UNLESS OTHERWISE SPECIFIED)			CONTRACT NO.		
MATERIAL			APPROVALS		DATE
FINISH			DRAWN		G.S. 05/27/15
APPLICATION			CHECKED		R.G. 05/27/15
DO NOT SCALE DRAWING			ISSUED		
SIZE	B	FSCM NO.	8U759	DWG NO.	300/RC0464X0
SCALE				NONE	SHEET 1 OF 1

ALPHA PRODUCTS, INC.
 351 IRVING DR, OXNARD, CA 93030 USA
 TEL: (805)981-8666 FAX: (805)988-6555
 E-MAIL: info@alpha-products.com

POT, 16MM, 20KQ x 9.5(3/8"), DPDT SW, PUSH-PUSH, SLDR

1. ALL DIMENSIONS ARE IN MM.

NOTES: